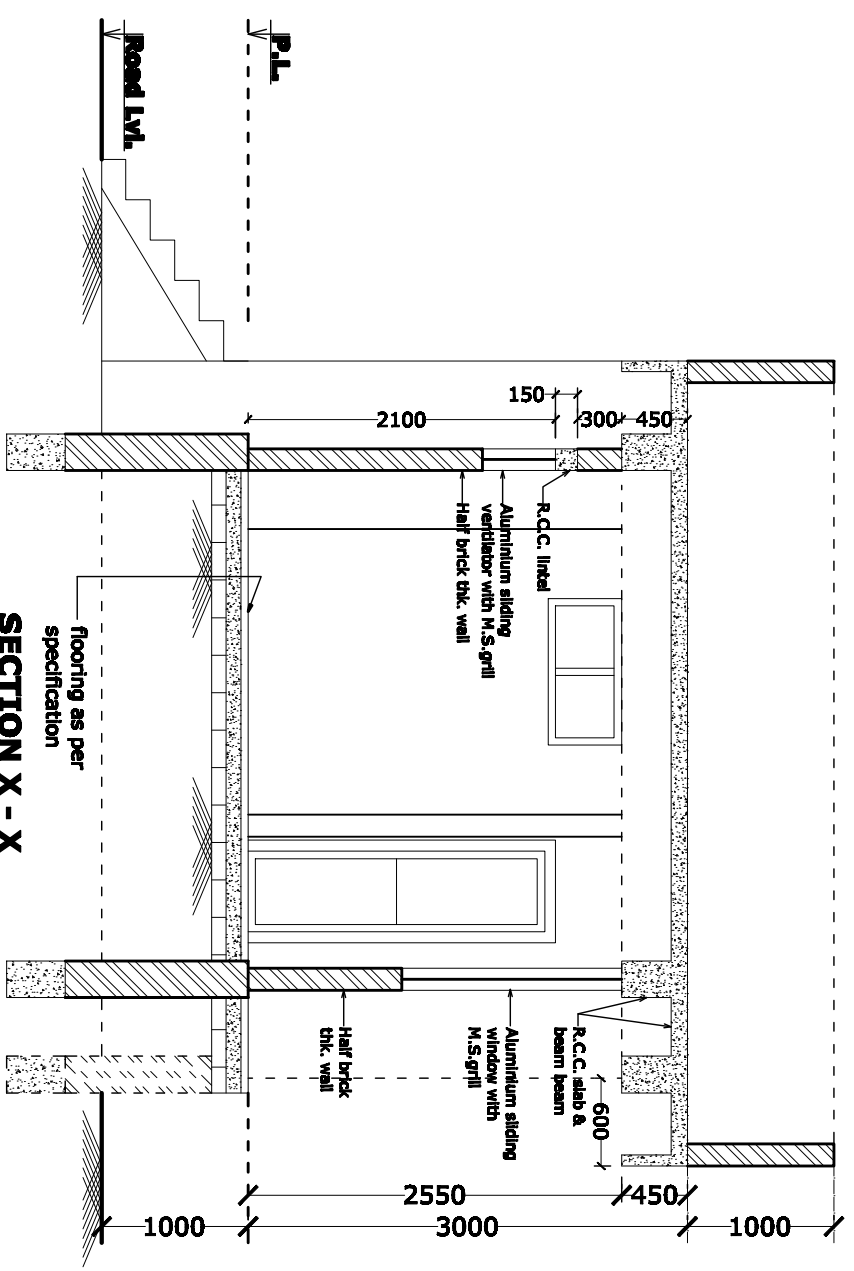


FRONT ELEVATION

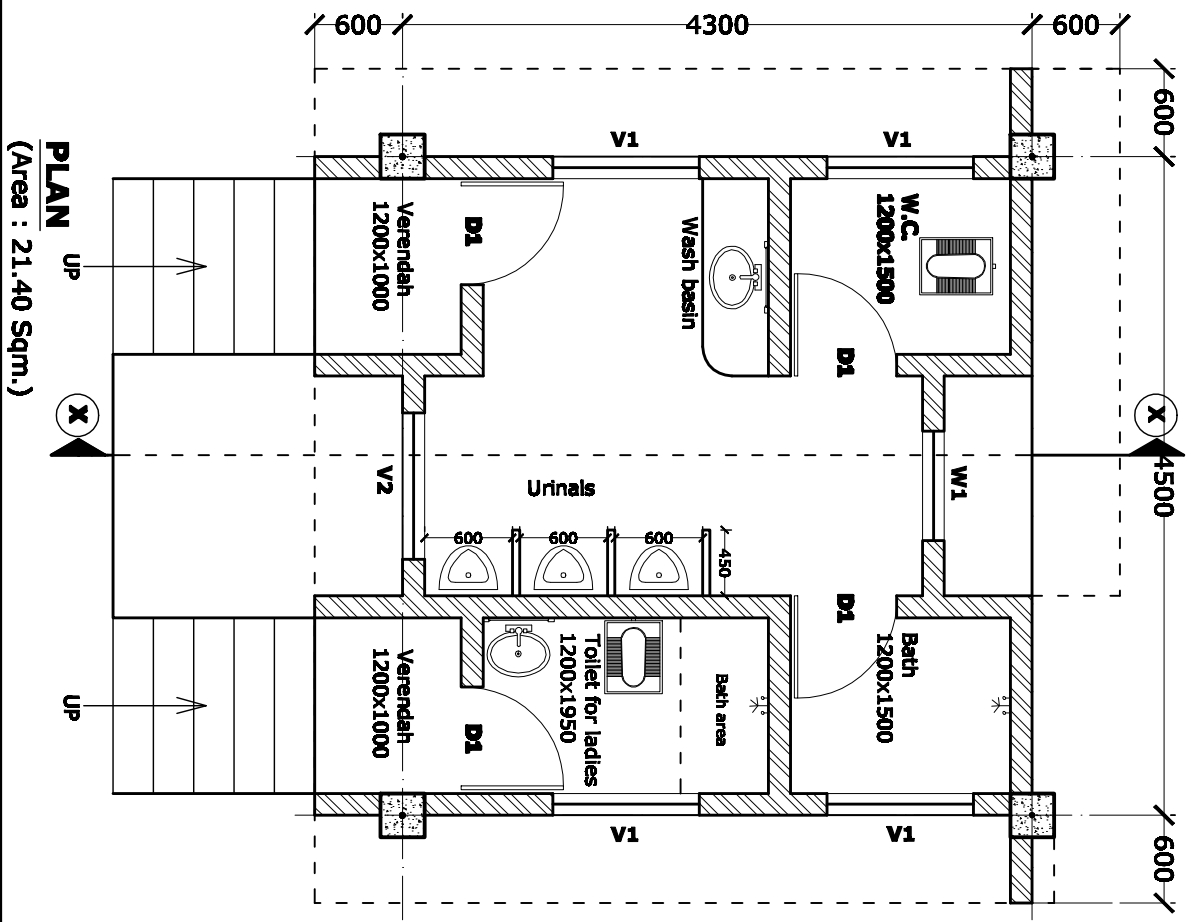
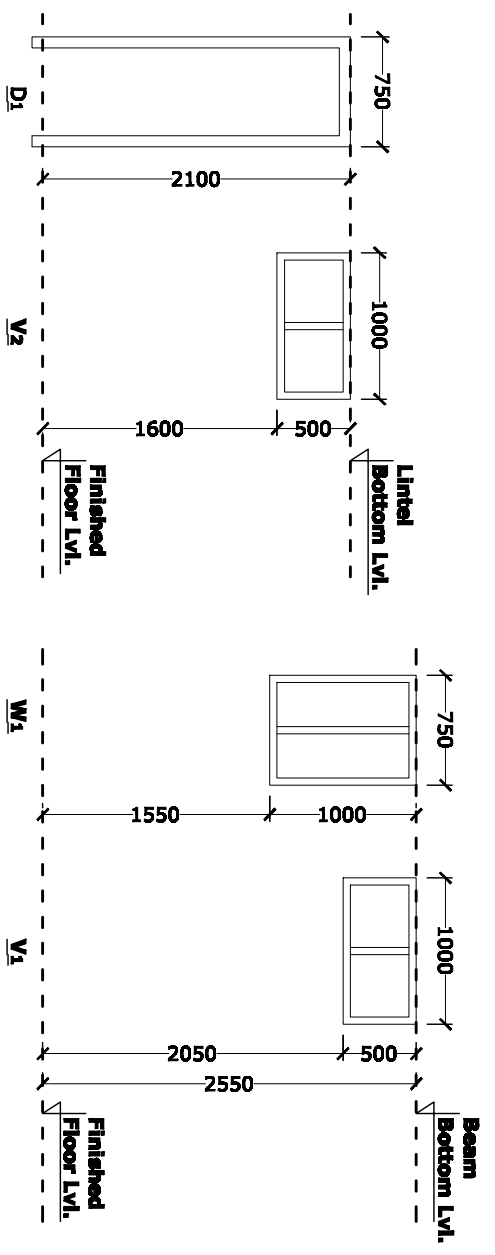


SECTION X - X

SCHEDULE OF DOORS, WINDOWS & VENTILATORS :

Sl.no.	Type	Specification	level of opening	Size	Nos
01	D1	P.V.C. frame & P.V.C. door shutter	lintel soffit (2100mm)	750x2100	4
02	W1	Aluminium sliding window with M.S.grill	beam soffit (2550mm)	750x1000	1
03	V1	Aluminium sliding ventilator with M.S.grill	beam soffit (2550mm)	1000x500	4
04	V2	Aluminium sliding ventilator with M.S.grill	lintel soffit (2100mm)	1000x500	1

DETAIL OF DOORS, WINDOWS & VENTILATORS:



PLAN
(Area : 21.40 Sqm.)

SL.NO.	01.	DATE	04-03-2016	ISSUE/REVISION	ISSUED FOR TENDER	SIGN
PROJECT	ESTABLISHMENT OF 5000 MT CAPACITY COLD STORAGE AT CHHAYGAON, KAMRUP, ASSAM.					
CLIENT	ASSAM STATE AGRICULTURAL MARKETING BOARD, R.K.HISSON ROAD, ULUBARI, GUWAHATI-77					
DWG.	PLAN, ELEVATION & SECTION, (TOILET BLOCK)					
SEAL & SIGN.	PREPARED BY: BARTHAHAKUR & ASSOCIATES R.G.BORJUAH ROAD OPPOSITE COMMERCE COLLEGE CHANDMARU, GUWAHATI-3 PHONE NO : 0361-2463366 DRN BY: _____ CHKD BY: _____ SCALE 1:50 ARCH-01 Soha Kalita Des.					